

GEN4



MIDWEST
MACHINERY CO



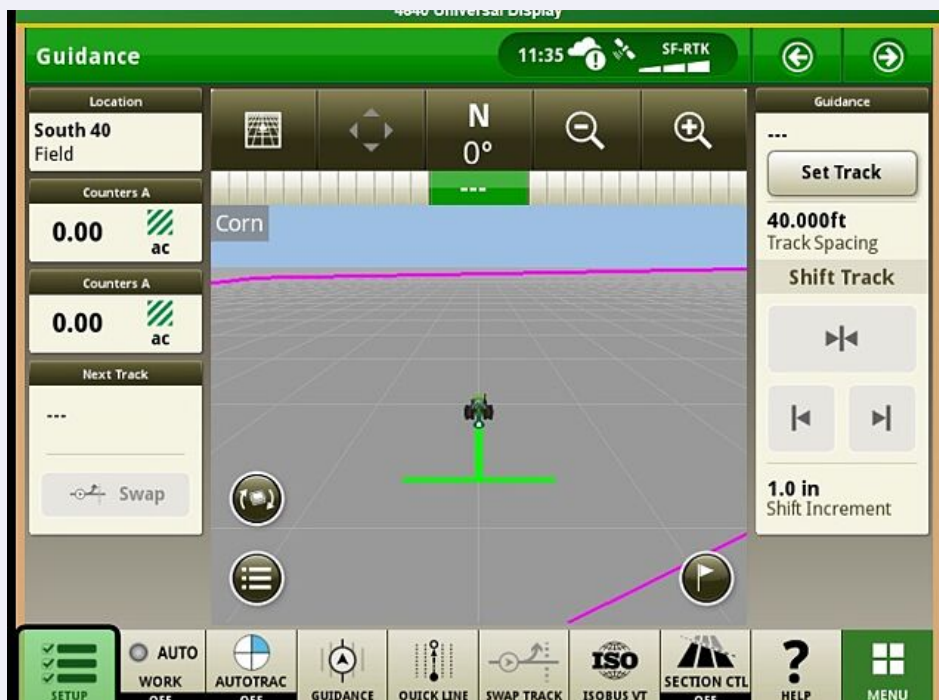
ADJUSTING SECTION CONTROL TIMES

Where to locate Section Control times on a Gen4 4600/4640.

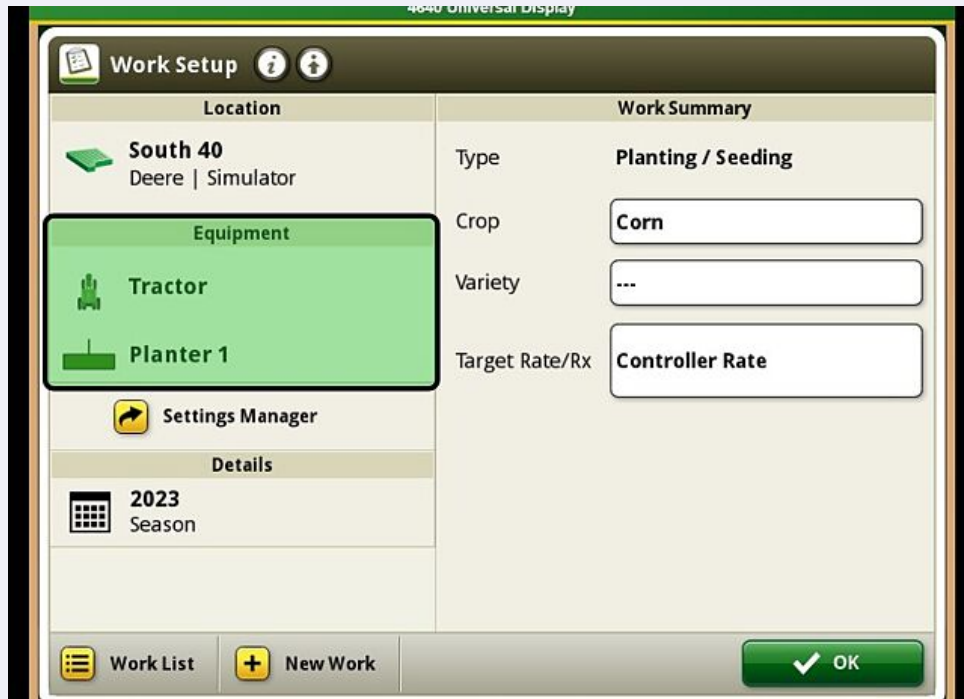
Gen4 - Adjusting Section Control Times

Where to locate Section Control times on a Gen4 4600/4640

- 1 Select "Setup" in the bottom left of the screen



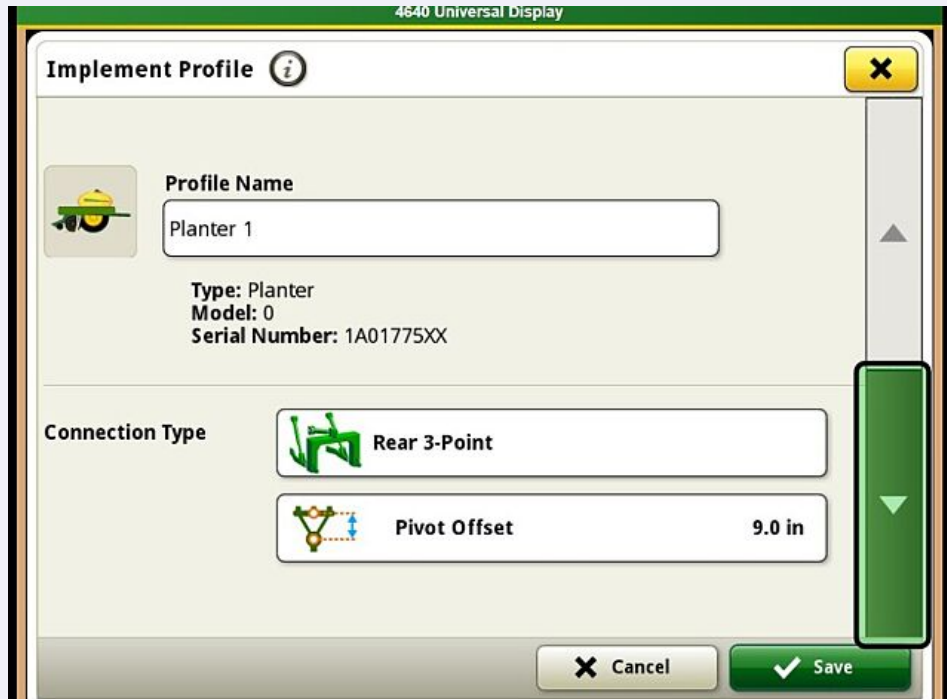
2 Select the Equipment section



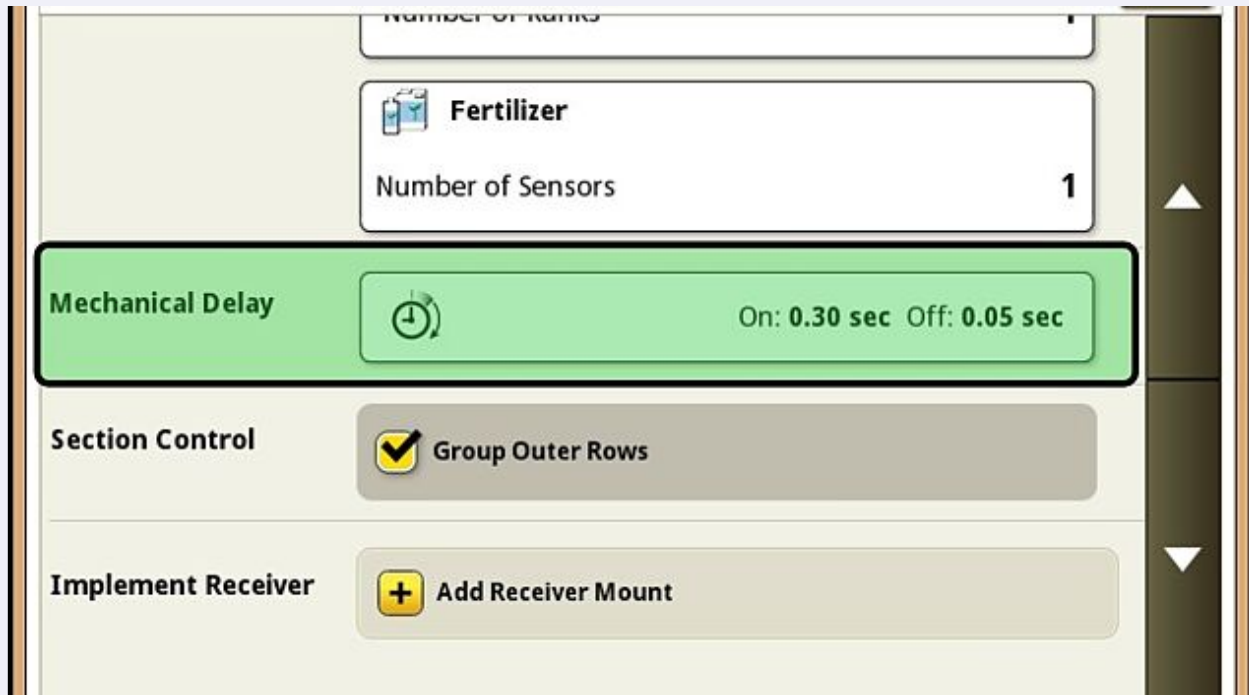
3 Select the Planter



- 4 Scroll down until Operator sees "Mechanical Delay" times shown in Step 5



- 5 Select the white box next to "Mechanical Delay"



6 Adjust Mechanical Delay times as needed

